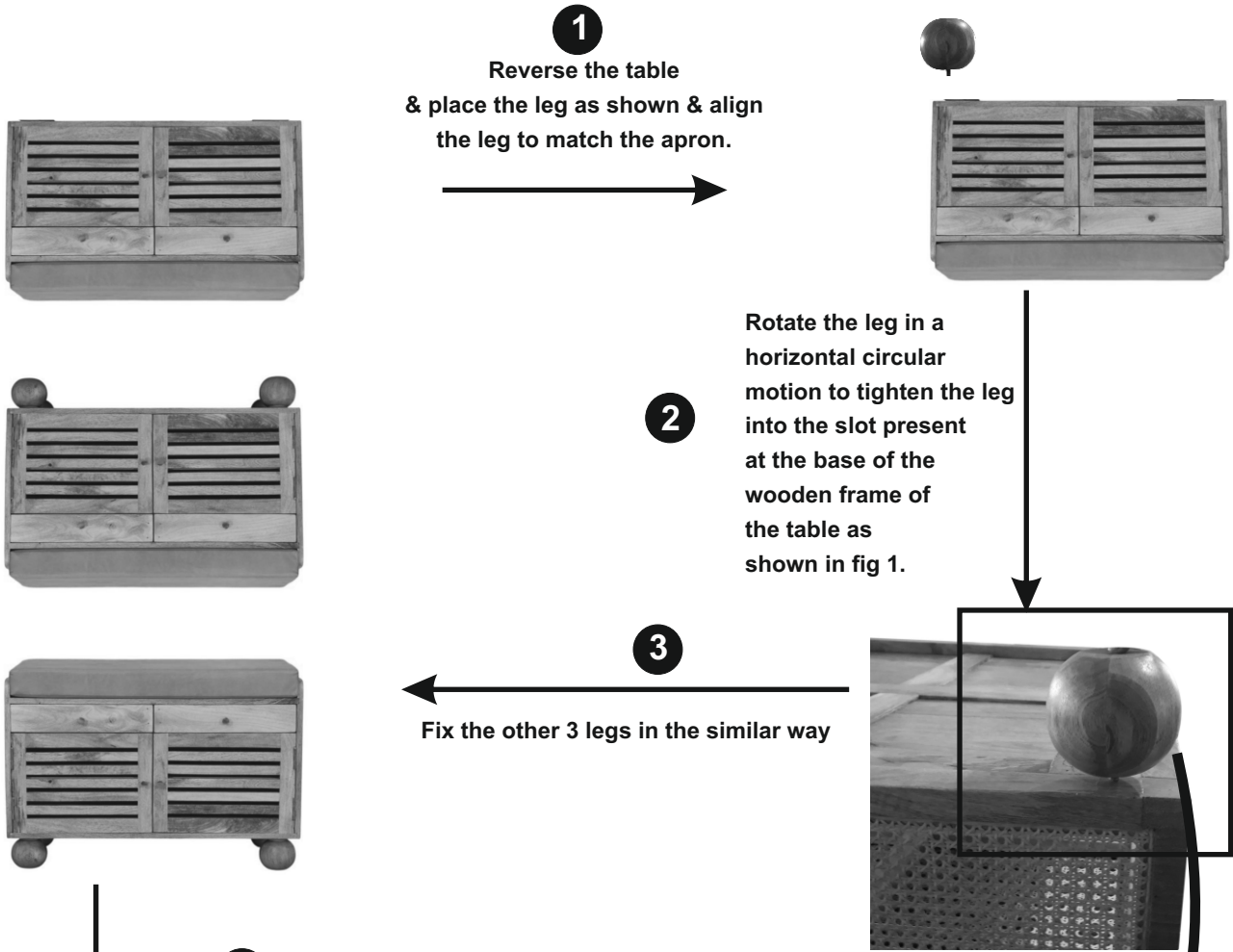


ASSEMBLY INSTRUCTIONS

ITEM CODE : IN 4379

ITEM DESCRIPTION : BENCH



1

Reverse the table
& place the leg as shown & align
the leg to match the apron.



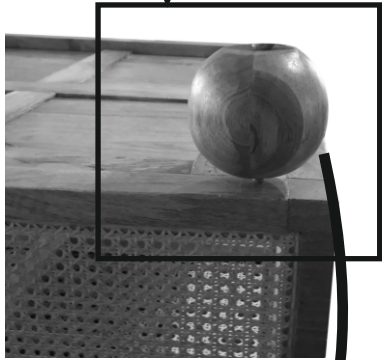
2

Rotate the leg in a
horizontal circular
motion to tighten the leg
into the slot present
at the base of the
wooden frame of
the table as
shown in fig 1.



3

Fix the other 3 legs in the similar way



4

Reverse the table
straight. Now your
table is ready for use.

