

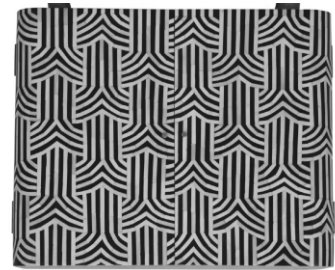
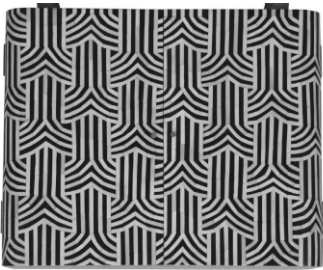
# ASSEMBLY INSTRUCTIONS

ITEM CODE : IN 3392

ITEM DESCRIPTION : CABINET

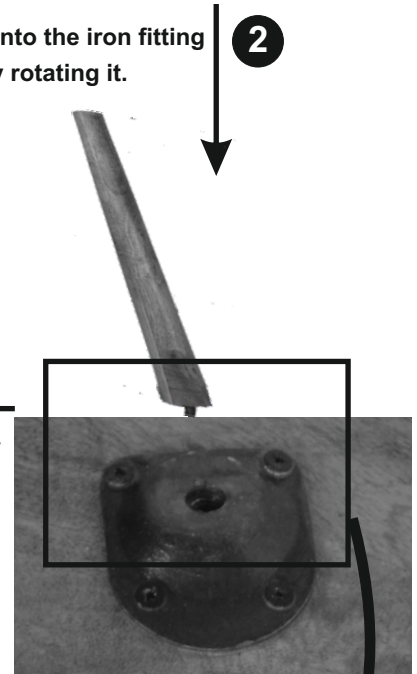
1

Reverse the Cabinet & place the leg as shown & align the leg to match the apron.



Twist the leg into the iron fitting slot by rotating it.

2



3

Fix the other legs in the similar way

4

Reverse the cabinet straight. Now your Cabinet is ready for use

