

ASSEMBLY INSTRUCTIONS

ITEM CODE : IN 1268

ITEM DESCRIPTION : ARM CHAIR IN GREY VELVET



1

Reverse the chair top & place the leg as shown & align the leg to match the apron.



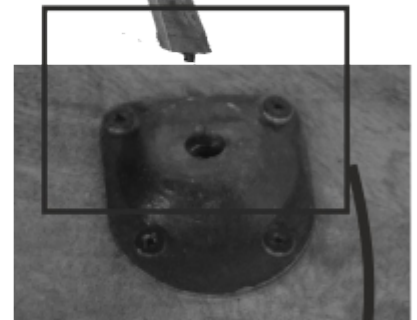
Twist the leg into the iron fitting slot by rotating it.

2



3

Fix the other legs in the similar way



4

Reverse the chair straight. Now your chair is ready for use

